



Tyre Bale Trials Monitoring

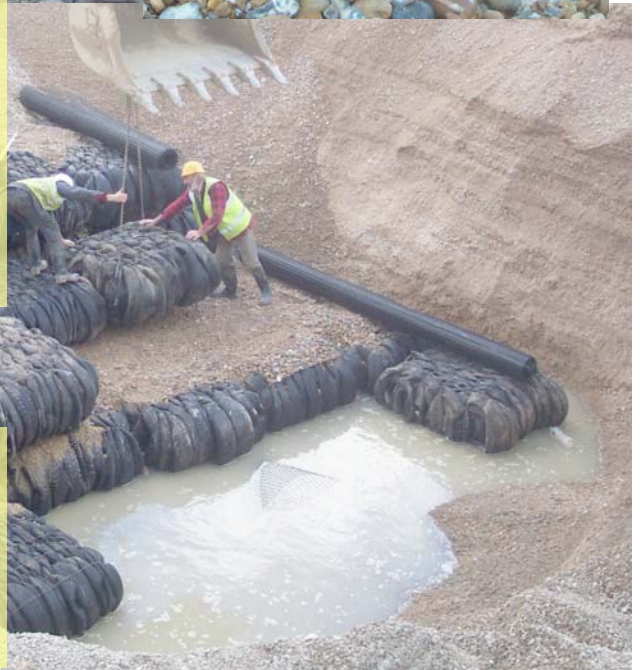
Similarly, well points were established from which water samples could be obtained

Wells were located not only in the bale structure but also a safe distance away to provide control samples



Scientists from Southampton University are undertaking the water quality tests, visiting site every spring tide

It was interesting to note that despite being quite close to the high water mark, very little water percolated into the excavation at high tide



The photo (right) was taken on a 7.0m tide, so the water level seen is 2.0m lower than the sea level only 10m away